

# Gilded Age vs. Progressive Era

---

□ Social Darwinism

□ Immigrant ghettos

□ Laissez faire

□ Natural law of competition

□ Social Gospel

□ Settlement houses

□ Gov't intervention

□ Gov't regulation

# Gilded Age vs. Progressive Era

---

- Monopolies
- Exploitation
- Strike breaking
- Bossism
- Patronage
- Trust Busting
- Conservation
- Collective bargaining
- Civil Service
- Merit System

# Gilded Age vs. Progressive Era

---

□ Expansionists

□ Isolationists

□ Yellow  
journalists

□ Muckrakers

□ Ineffective  
government  
regulation

□ Strong  
presidents (trust  
busters)

# The Progressive Era 1900-1917

---

## □ **Goals**

□ protect social welfare

□ promote moral improvement

□ create economic reform

□ gov't reform

# The Progressive Era 1900-1917

---

## □ **The Progressive Presidents**

□ Theodore Roosevelt 1901-1909

□ William H. Taft 1909-1913

□ Woodrow Wilson 1913-1920

# The Progressive Era 1900-1917

---

- **Progressive Era Amendments**
- Graduated income tax – 16<sup>th</sup>
- Direct election of Senators – 17<sup>th</sup>
- temperance movement – 18<sup>th</sup>
- women's movement – 19<sup>th</sup>

# The Progressive Era 1900-1917

---

□ **Muckrakers**

□ journalists and writers

□ **Attacks On**

□ big business

□ labor

□ the economy

# The Progressive Era 1900-1917

---

## □ Major Muckrakers

□ Jacob Riis

□ Upton Sinclair

□ Ida Tarbell

□ Ray Stannard Baker



# The Progressive Era 1900-1917

---

## □ Major Muckrakers

□ John Spargo

□ Muckraking magazines

□ *McClure's, Cosmopolitan, Colliers*

# Theodore Roosevelt's Square Deal

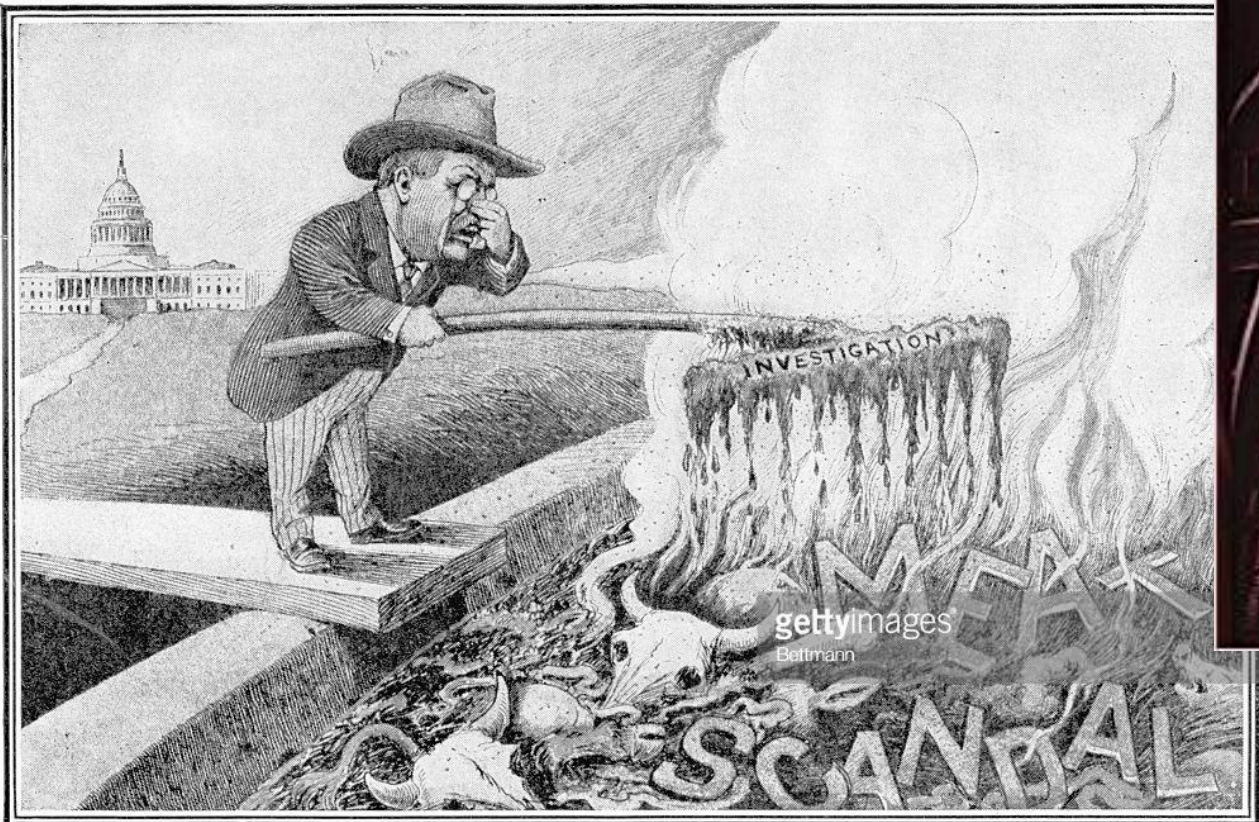
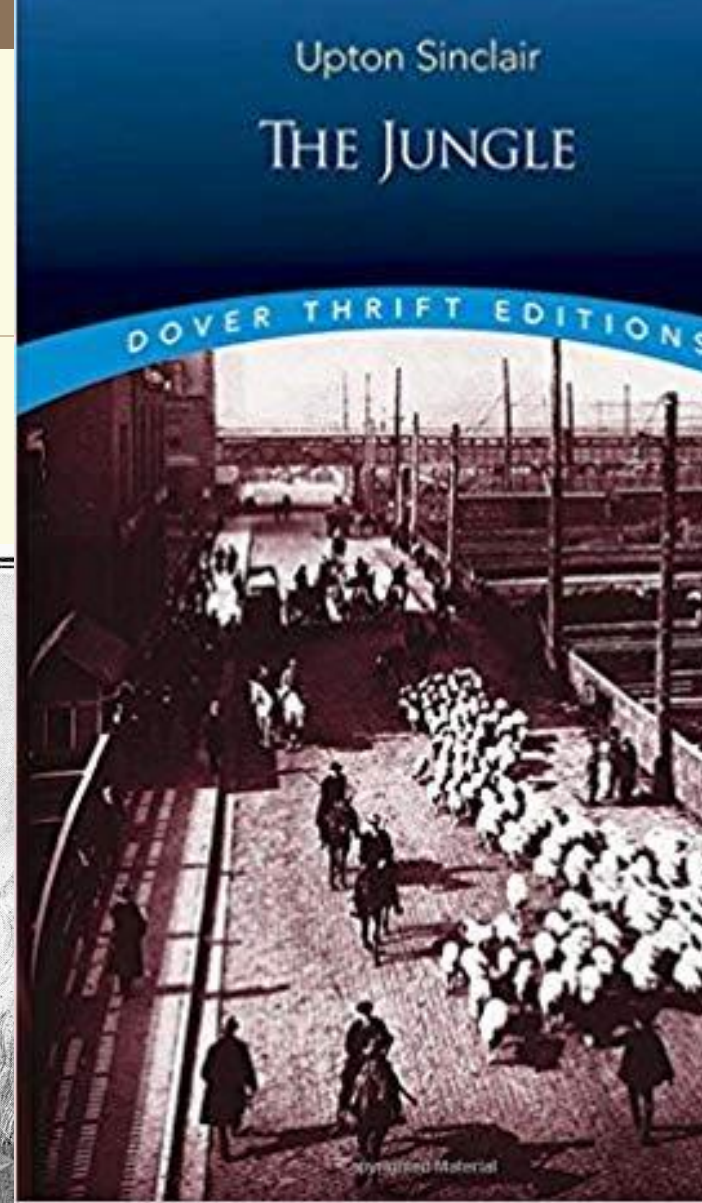
---

- The three C's
- Northern Securities Case 1902
- Anthracite Coal Strike 1902
- Elkins Act
- Hepburn Act

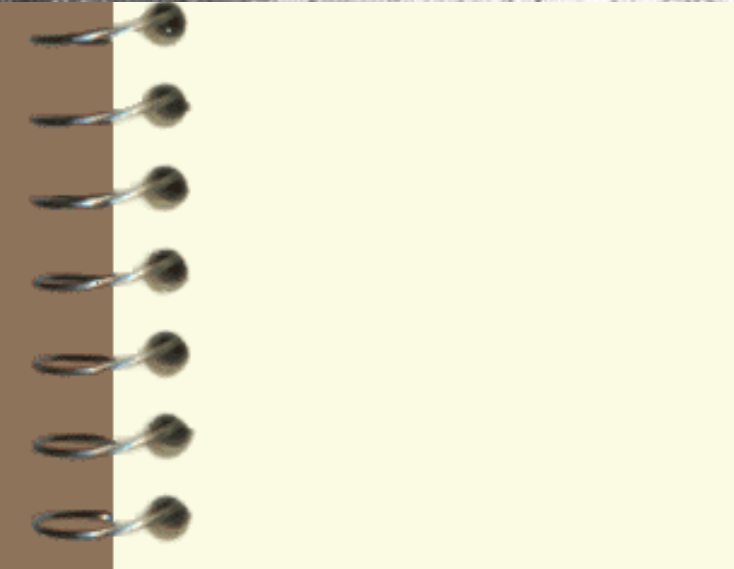
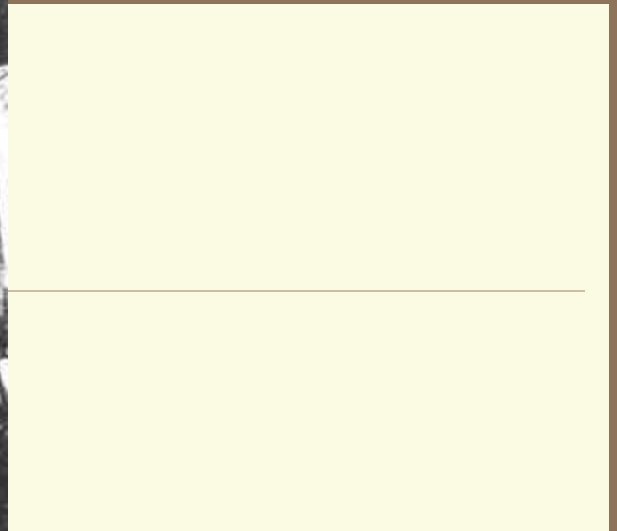
# Theodore Roosevelt's Square Deal

---

- Pure Food and Drug Act
- Meat Inspection Act
- Newlands Reclamation Act



A NAUSEATING JOB, BUT IT MUST BE DONE



# Theodore Roosevelt's Square Deal

---



**Roosevelt created 16 national monuments, 51 wildlife refuges and 5 new national parks.**

# William H. Taft 1909-1913

---

- Mann-Elkins Act
- Payne-Aldrich Tariff
- 90+ antitrust lawsuits
- 8 hour workday – fed gov't
- 16<sup>th</sup> and 17<sup>th</sup> amendments

# The Progressive Era 1900-1917

---

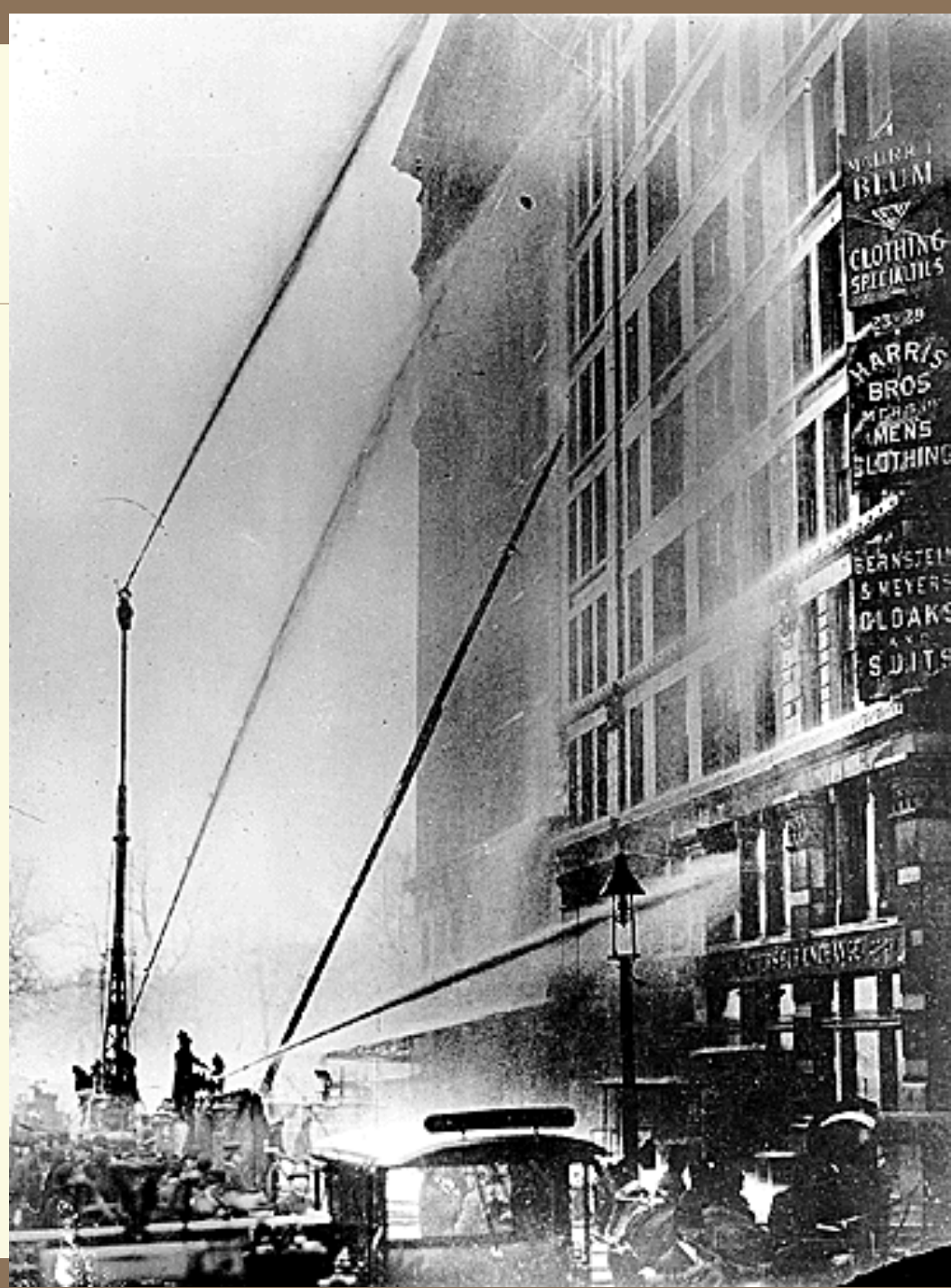
- **The Triangle Fire 1911**
- A defining moment of the Progressive Era



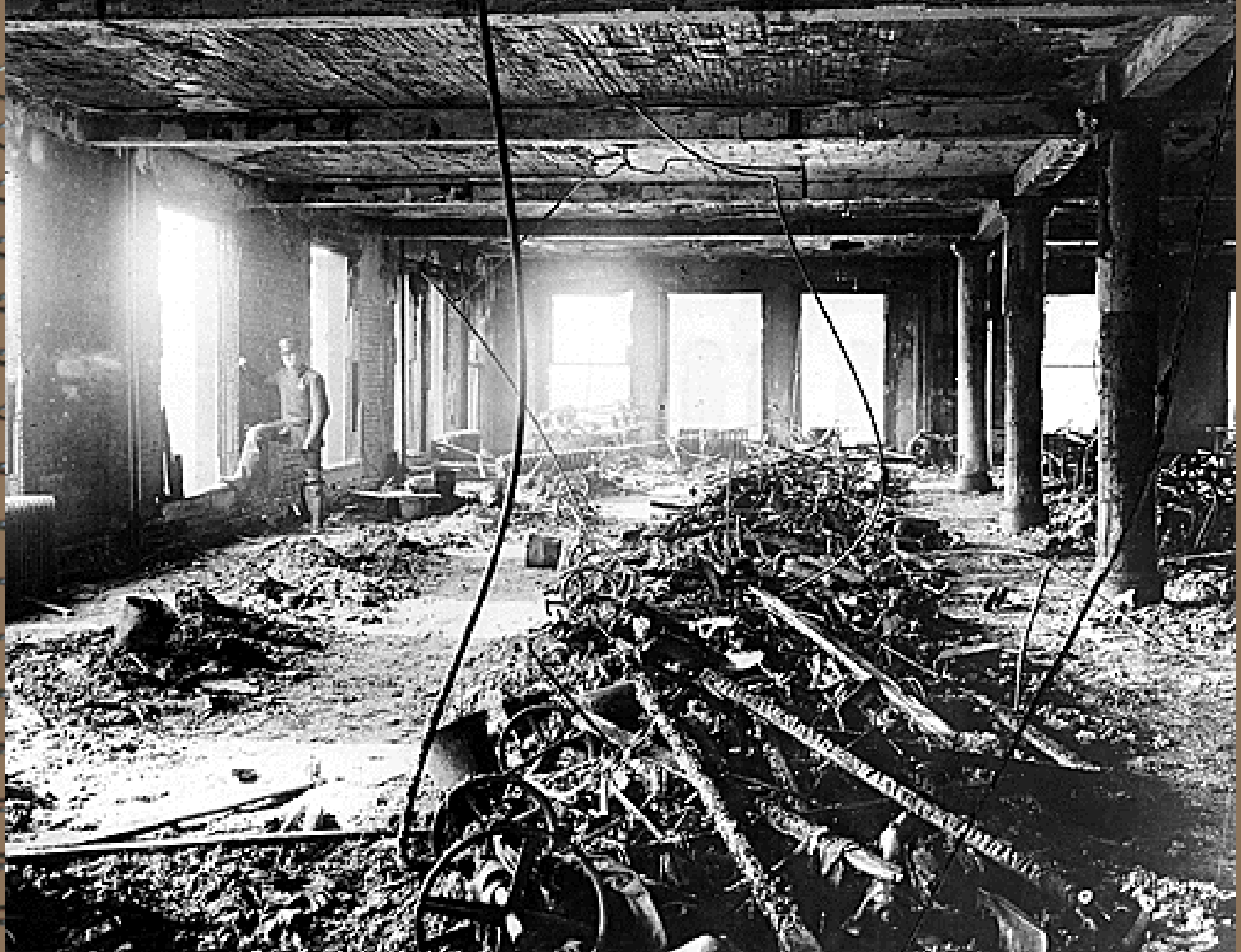




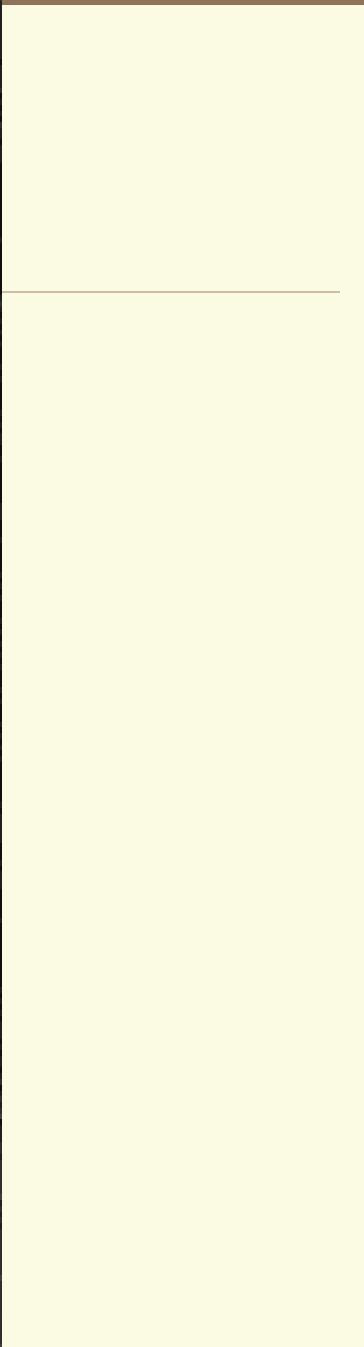
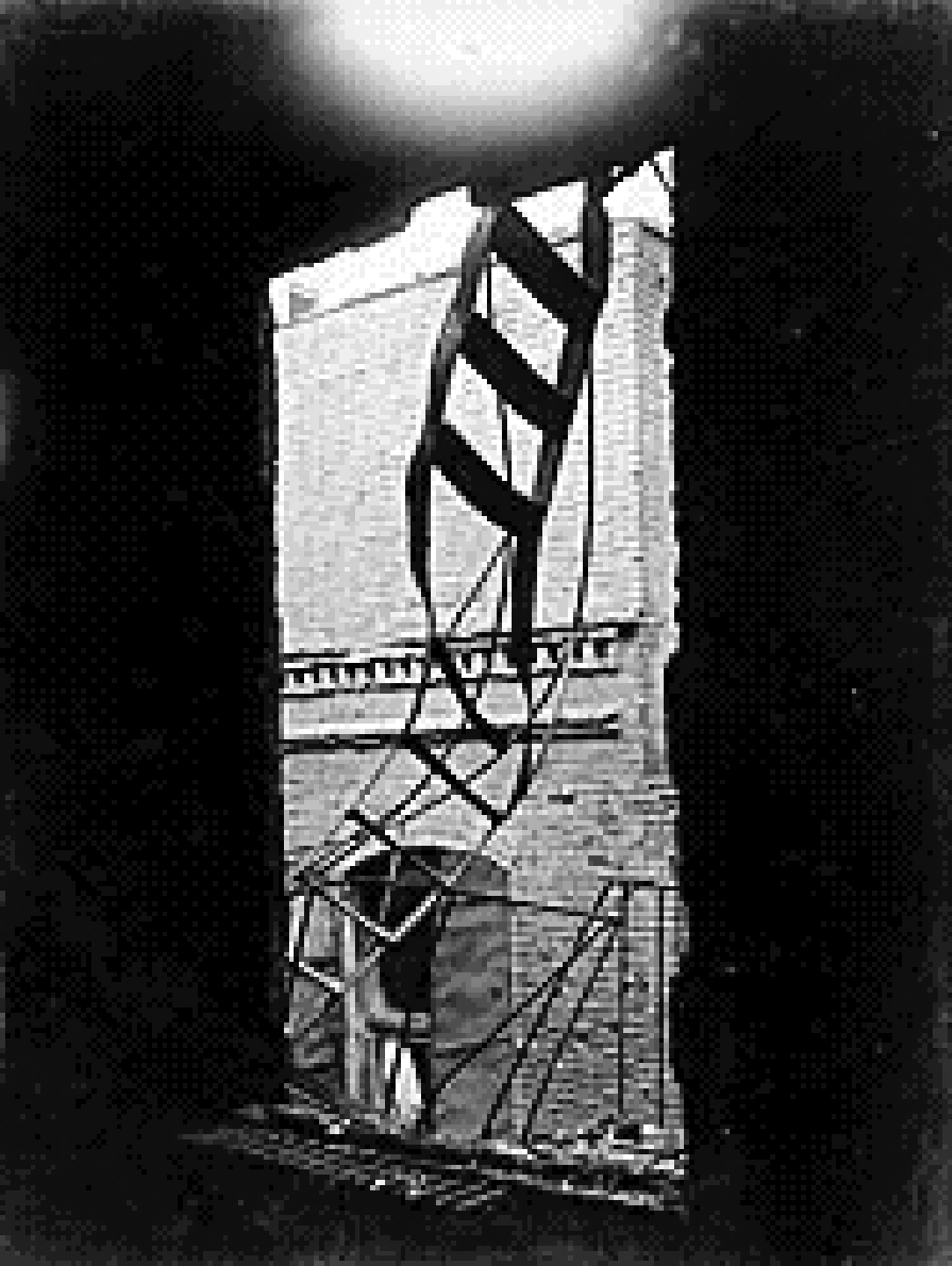
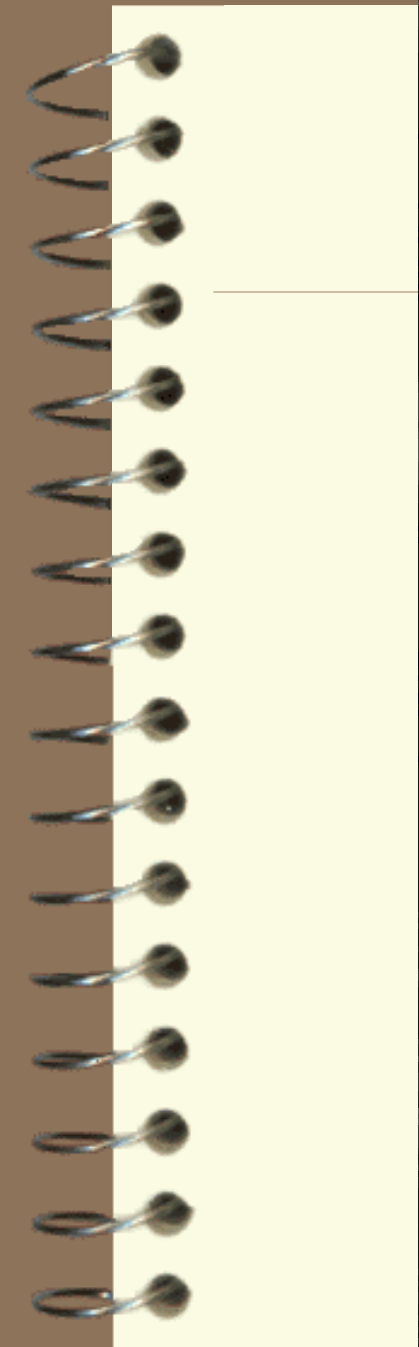




















WNYC

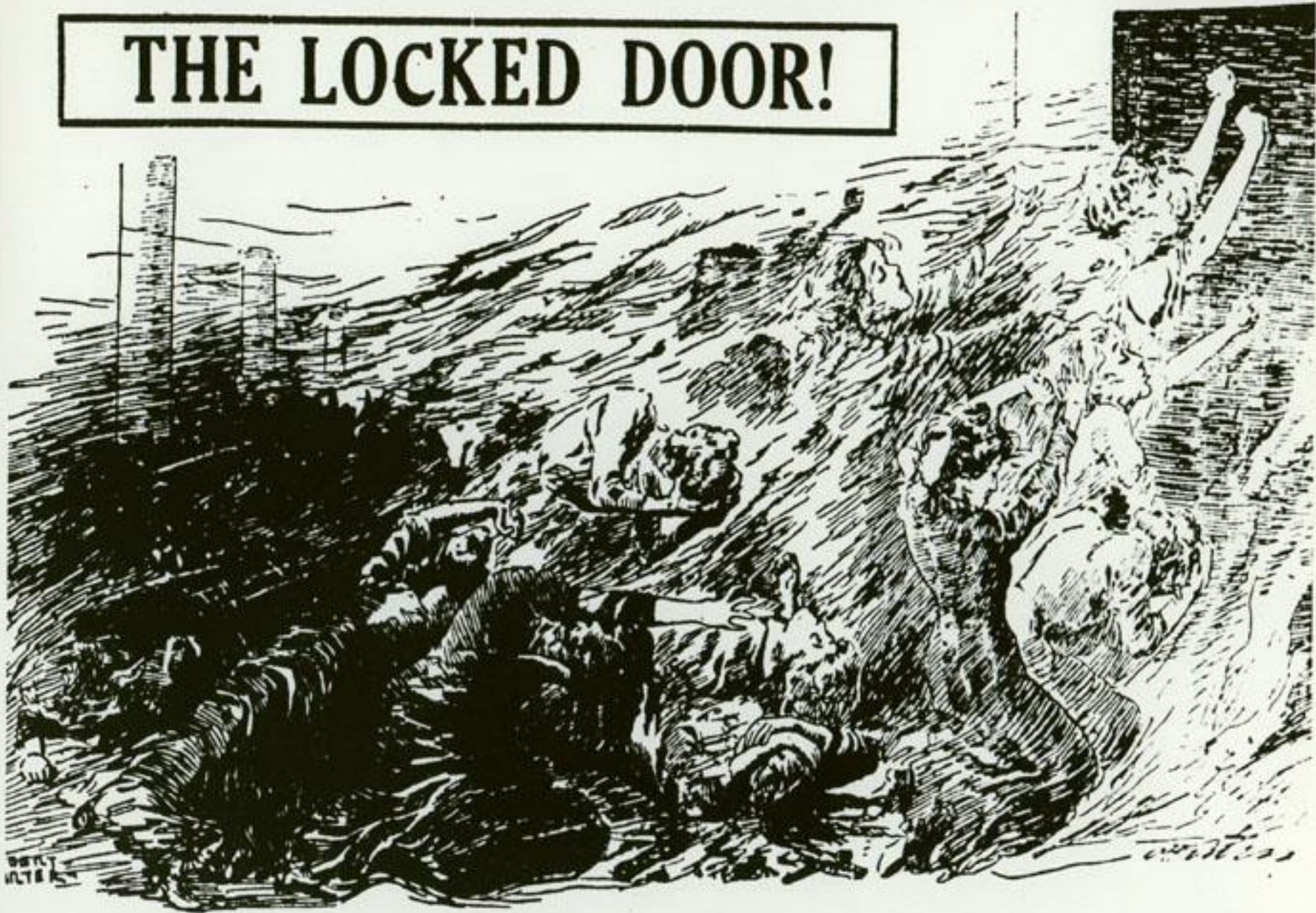








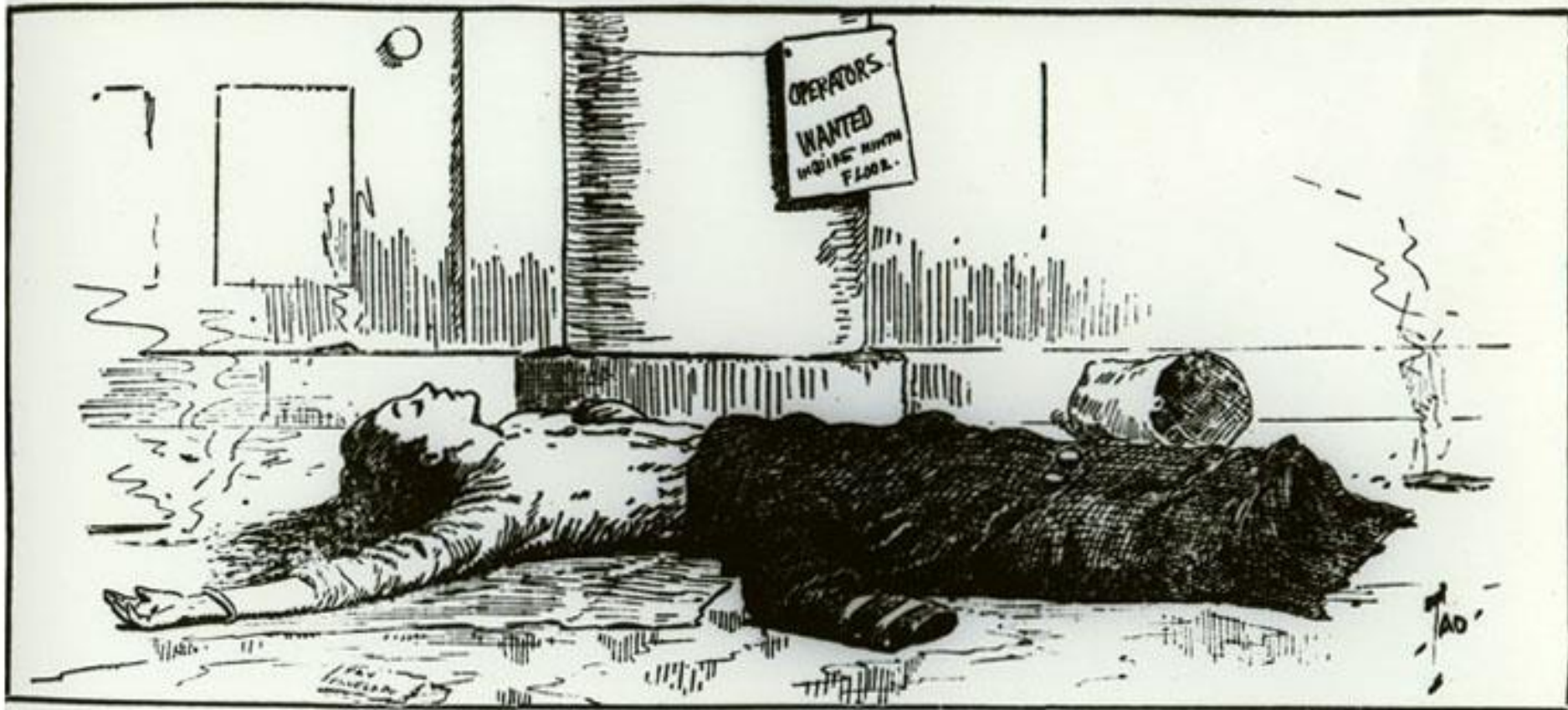
# THE LOCKED DOOR!





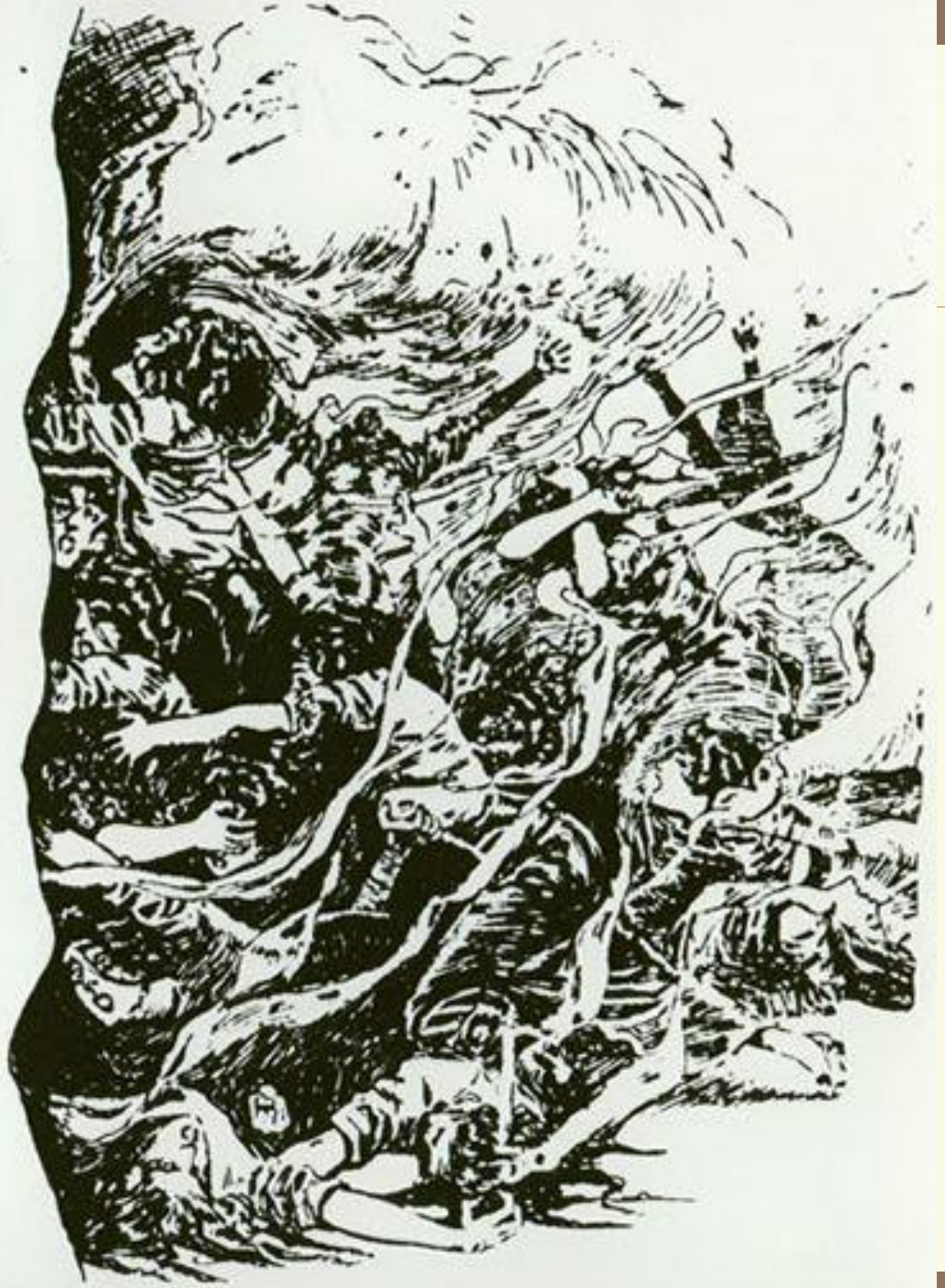
# This Is One of a Hundred Murdered

Is any one to be punished for this?

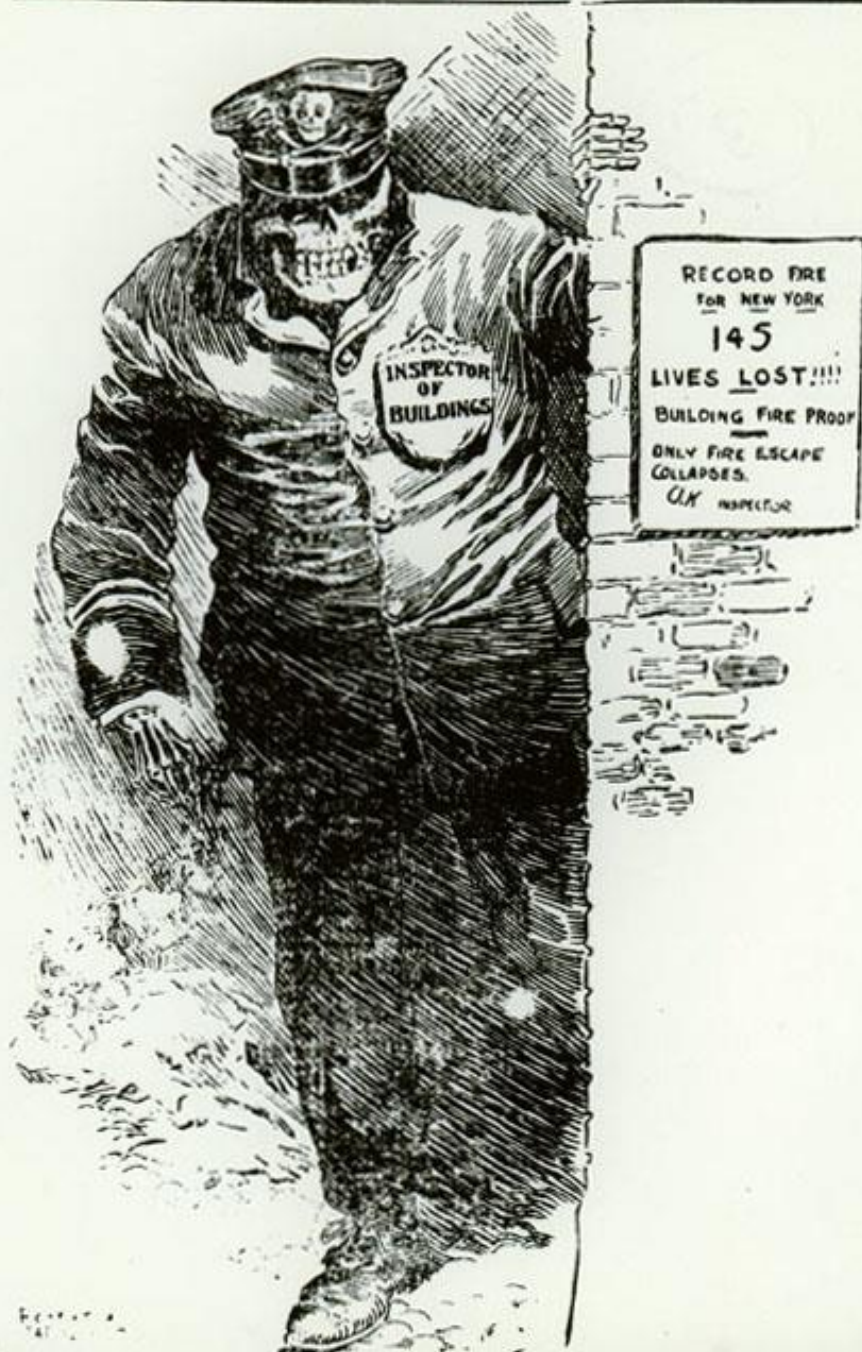




*Flower*



# INSPECTOR OF BUILDINGS!





# FIRE TRAP VICTIMS BURIED

## DRAFT NEW LAW TO SAVE SHOP WORK

**THE WEATHER**  
Fair and much milder today. In the evening.

**NEW YORK EVENING JOURNAL**

8TH EDITION  
**EXTRA**

No. 9,921. P. M. NEW YORK, TUESDAY, MARCH 28, 1911. ONE CENT

### SHEEHAN LOSES IN CAUCUS

Alfred H. J. Sheehan, Mayor-elect, lost his seat in the caucus held at the City Hall last night. He was defeated by James J. McGowan, who was elected by a vote of 100 to 90. The caucus was held at the City Hall last night. It was the first caucus since the death of Mayor McClellan. The caucus was held at the City Hall last night. It was the first caucus since the death of Mayor McClellan.

### Who Is Responsible?



# WOMAN TELLS OF FIGHT FOR LIFE AT BARRED DOORS!

The latest developments to-day in the Aach building fire, where 145 wage earners, the majority of them girls, lost their lives, are these:

Mrs. Irene Selvos, who escaped from the burning building, corroborated in a thrilling story of the fire the charge made by Chief Croker and others that the doors were locked, cutting off all escape by the stairs. Mrs. Selvos will tell her story to-day to the District Attorney and the police.

Fire Marshal William L. Deers to-day will continue his inquiry into the fire. He will examine fifteen operators and eight firemen.

Twenty-nine more bodies were identified, making a total of 113 out of the 145 victims. In this total are included the skull and the two bodies the police insist are still in the subcellar. The number of bodies removed to the Morgue was 142. This leaves twenty-nine unidentified at the Morgue.

Through the efforts of the Evening Journal and American a committee comprising five men of expert opinion was organized to advise amendments to the present building laws that will throw safeguards around working men and women in crowded shops and tall manufacturing structures.

Contributions for the relief of the families of the victims to-day reached the total of \$14,000. Of this amount Jacob E. Schiff, treasurer of the Red Cross fund, contributed \$6,000, while \$2,000 was received at the Mayor's office.

There were a few quiet funerals yesterday, and to-day there will be more, when the victims of the fire horror will be carried to their graves with a head marching ahead playing dead marches. The United Hebrew Union and other labor organizations have planned to march in the funeral procession. Religious services will be held in synagogues and Christian churches.

Richard H. Miller, Department of Buildings, who has been on a pleasure jaunt to Panama arrived at Greenwich, Ga., yesterday, and is reported to be hastening to New York to-day.

Dr. O'Connor, who has charge of the bodies at the Morgue, will to-day remove the trinkets and jewelry of the unidentified dead to the East Thirty-fifth street station. Later they will be taken to the Coroner's office.

### SURVIVOR'S REMARKABLE STORY.

The remarkable story of Mrs. Irene Selvos, of No. 180 East Second street, who escaped from the burning Aach Building, in which she corroborates Fire Chief Croker and others, who charge that the doors leading to the stairs were locked, cutting off all escape in that direction, was related to-day to an Evening Journal reporter before Mrs. Selvos went to the District Attorney's office to make her statement.

"I had been employed for the last two years as a sewing machine operator in the factory of the Triangle Shirt Waist Company at Washington place and Greene street," said Mrs. Selvos. "I was familiar with the eighth, sixth and tenth floors of the building, and with all the ways

about the building. I do not know how many were in that elevator when it passed down to the fifth floor. I do not know the number of the office of the company, but I do know that it was on the fifth floor. I do not know how many were in that elevator when it passed down to the fifth floor. I do not know the number of the office of the company, but I do know that it was on the fifth floor. I do not know how many were in that elevator when it passed down to the fifth floor. I do not know the number of the office of the company, but I do know that it was on the fifth floor.

Who is responsible for the accident of our hundred and forty-five young girls and boys of the 'Borough' fire trap? The whole head aches to know for the lawbreaker, unfortunates, crushed, slain and mangled because the building was rated as 'Borough'!

These dead girls cry aloud, not for revenge, but for justice. Their bones wracked before demand protection for the thousands of other girls who have not yet been sacrificed to fire. Their story lies with 'Who is responsible?'

7 HURT AS AUTO POLICEMAN HURT BY DINAWAY HORSE ENDS HIS ILLS BY

## HUNDRED AND FIFTY PERISH IN FACTORY FIRE; WOMEN AND GIRLS, TRAPPED IN TEN STORY BUILDING, LOST IN FLAMES OR HURL THEMSELVES TO DEATH



IDENTIFYING BODIES OF THOSE WHO JUMPED TO THE SIDEWALK.



BUILDING AT NORTHWEST CORNER OF EAST WASHINGTON STREET AND GREENE STREET, FROM WHICH TOP FLOORS IN WHICH LOSS OF LIFE OCCURRED WERE COMPLETELY DESTROYED.

*Only One Fire Escape*

**MARCH 25, 1911 - HELL ON EARTH FOR 150 WOMEN AND GIRLS  
FOR THE PROFITS OF A FEW, AT THE EXPENSE OF MANY**

# The Progressive Era 1900-1917

---

## □ Election of 1912

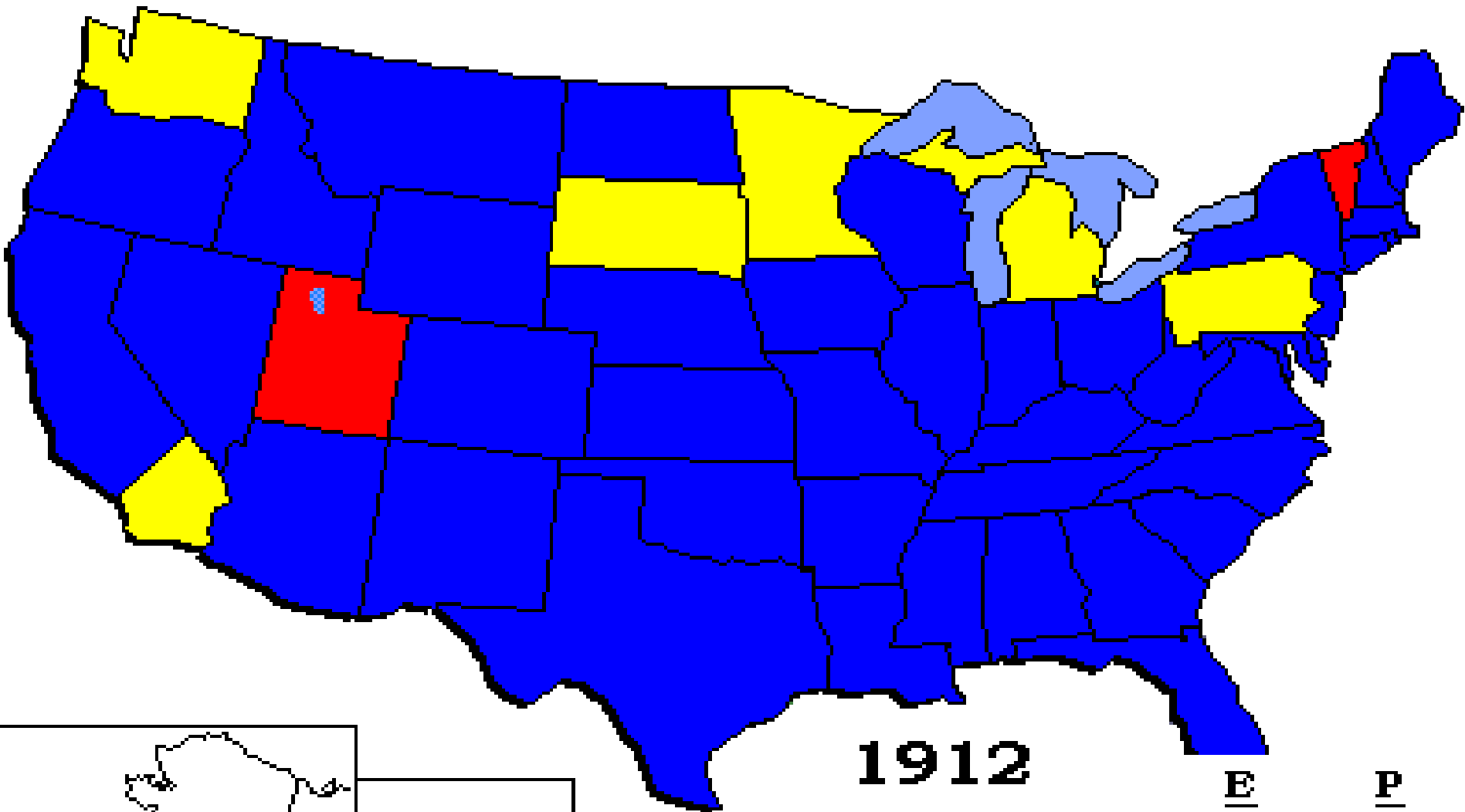
□ Taft – Repub incumbent

□ TR – Bull Moose/Progressive

□ Wilson – Demo

□ Eugene Debs – Socialist

□ LaFollette – Progressive Repub.



# 1912

		<u>E</u>	<u>P</u>
■ Dem.	W. Wilson	435	41.9%
■ Rep.	H. Taft	8	23.2%
■ Pro.	T. Roosevelt	88	27.4%
■ Soc.	E. Debs		6.1%



# The Progressive Era 1900-1917

---

- Wilson wins with splits in Rep Party
- **New Freedom** – domestic agenda – strong leadership like TR
- 1st state of union address in person since John Adams

# The Progressive Era 1900-1917

---

- A. Threatens to expose business practices of members of Cong
- B. Pujo Commission – inv. banks
- C. Underwood Simmons Tariff 1913 – 2<sup>nd</sup> large rate reduction
- Offset by 16<sup>th</sup> amendment

# The Progressive Era 1900-1917

---

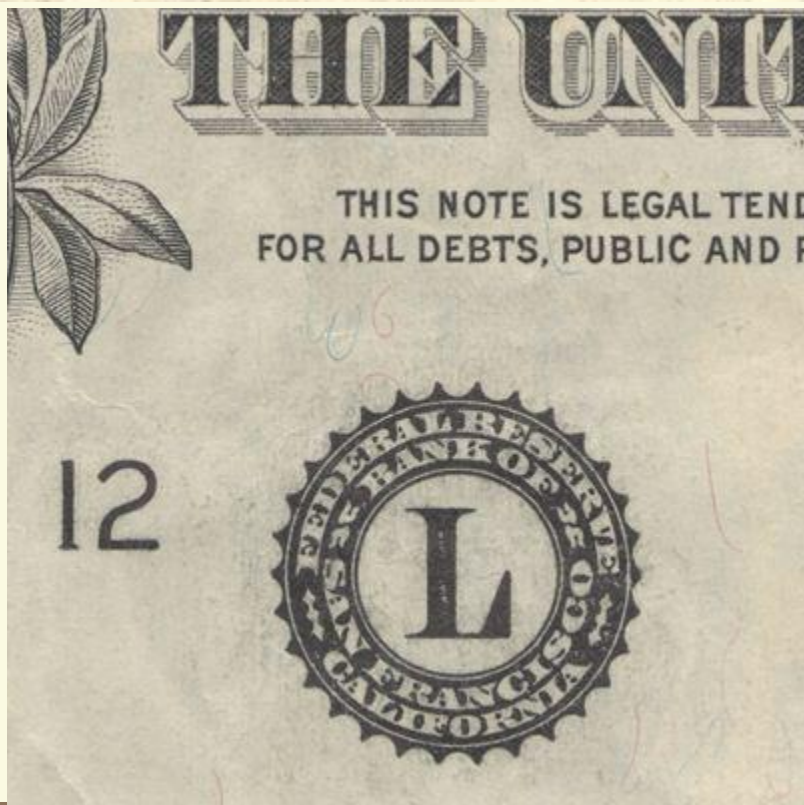
## □ **D. Federal Reserve Act 1913**

□ Reforms U.S. banking sys.

□ 12 banks to regulate amount of \$  
in circulation

□ Small bank access to nat'l system

□ Greatly helped with WWI



# The Progressive Era 1900-1917

---

## □ **E. Clayton Anti-Trust Act 1914**

### □ \*Provisions....

□ 1. specifically defined “unfair”

□ 2. outlawed interlocking directorates

□ 3. held officers of corporations personally responsible for any violations

# The Progressive Era 1900-1917

---

- F. Appt of Louis Brandeis to Supreme Court
- G. Workman's Compensation Act 1916
- H. Adamson Act 1916
- I. Keating Owen Act 1916

# The Progressive Era 1900-1917

---

## □ **Progressive Governors**

□ Robert LaFollette – Gov. of Wisconsin

□ used teams of experts

□ used resources at U. of Wis.

□ created laws w/o loopholes

□ political machine w/o the corruption

# The Progressive Era 1900-1917

---

- Charles Evans Hughes
- Gov. of New York
- exposed corruption in public gas and coal utilities



# The Progressive Era 1900-1917

---

- William S. U'ren – Gov. of Oregon
- Oregon system
- recall, referendum, initiative, secret ballot – all implemented at the state level

# FRE Practice – Write an Intro

---

- How did political, economic, and social reforms during the Progressive Era attempt to right the wrongs created during the Gilded Age?
- To what extent were these reforms successful?

# DBQ

---

- Evaluate the effectiveness of Progressive Era reformers and the federal government in bringing about reform at the national level.
- Be sure to analyze the successes and limitations of these efforts in the period of 1900-1920.